



爱智 崇德
博学 笃行

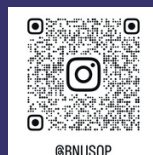
CONTACT US

 <https://phil.bnu.edu.cn/english>

 +86(10)58809394

 maziqian@bnu.edu.cn

Instagram



生命、价值与文明： 中国传统哲学的当代性

Life, Value and Civilization:
The Contemporary Relevance of
Traditional Chinese Philosophy

分主题 *Sub-themes:*

“道与罗格斯”
Tao and Logos

“身体与功夫”
Body and Kung Fu

“古典学与现代生活”
Classics and Modern Life

BEIJING, CHINA
中国·北京



01

“京师哲学暑期学堂”是什么？

What is BNU Philosophy Summer School?



The summer school, hosted by the School of Philosophy at Beijing Normal University, is dedicated to providing a platform for overseas young scholars to visit China and deeply engage in the study of Chinese philosophy, culture, and other related fields. Through diverse formats such as academic lectures, cultural experiences, and study tours, it aims to enhance the understanding of traditional Chinese culture among outstanding young scholars.

After ten successful years, this program has successfully attracted over 400 overseas elite students from more than 60 countries to study in China.



Participants

400+



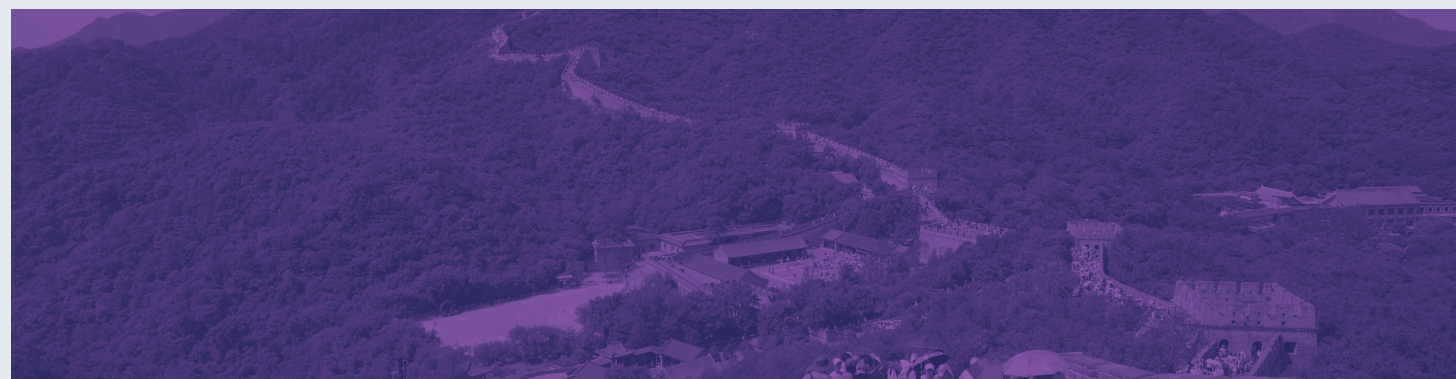
Countries

60+



Lecturers

50+



02

活动内容

Activities

All lectures, academic comments, and Q&A sessions within the program are exclusively delivered by distinguished experts deeply immersed in the field of philosophy.



Lectures

Cultural
Visit



Students can immerse themselves in the profound cultural heritage of Beijing by visiting renowned attractions, such as the Confucian Temple, The Forbidden City, the National Museum and the Great Wall.

We will design study tours to destinations outside Beijing, selecting regions with rich cultural heritage and distinctive local characteristics to create an immersive cultural learning experience for participants.



Study
Tour

Presentation



On the final day, students will share learning outcomes, reflect on experiences, and give presentations. After that, the organizing team will present each participant with a certificate of completion.

03

活动日程 Schedule

时间 Time

2026年7月中旬，为期2周
2 Weeks in Mid-July 2026

主要活动地点 Main Place

📍 北京师范大学
Beijing Normal University

课程亮点 Highlights



International Lectures Led by Distinguished Scholars

We invite a consortium of renowned professors from prestigious universities at home and abroad, leading academics in their respective disciplines, and top-tier industry experts to deliver joint lectures.



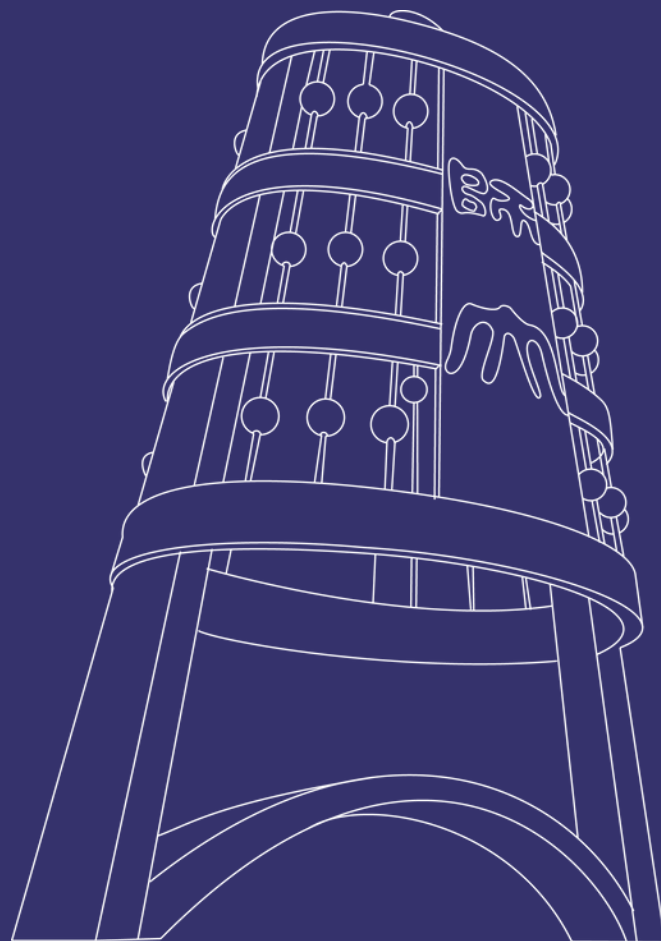
Cross-Border Collaborative Learning Programs

We will establish a communication platform for international participants, and promote cultural exchange and the building of international networks through formats such as group collaboration and joint seminars.



Lectures Coupled with Local Immersive Experiences

We will offer theme-related cultural lectures, paired with synchronized local immersive activities. Through hands-on participation, participants can gain an in-depth understanding of the historical context and life wisdom embedded in the culture.



04

报名方式 Admission Information

报名条件 Eligibility

Primary enrollment includes outstanding young foreign scholars and international students engaged in related research, aged 18 years or above with a bachelor's degree or higher.

Applicants should have a keen interest in Chinese traditional culture as well as a certain understanding of Chinese philosophy, history, literature, and other related fields.

Proficient English is required, as the program is **fully conducted in English**.

申请程序 Procedures

The registration deadline is **January 15th, 2026**. On or before that date, please submit the following application materials to Ms. Ma Ziqian at maziqian@bnu.edu.cn

1. Electronic copy of the passport information page
2. Personal resume or personal statement
3. Letter of recommendation from supervisor/employer
4. Application form

录取流程 Admission

The review committee will conduct an initial screening based on submitted materials and organize online interviews for qualified candidates. Please stay updated via email notifications.

费用情况 Fees

The program is **free of charge**. Additionally, the program will offer shared double-room accommodation during the program.